



---

---

**ATTENTION! PLEASE READ BEFORE YOU START!**

- SPC Direct Print RigidCore Flooring with the 2G locking system is normally loose laid without adhesive.
- Store flat and fully supported during shipping and storage.
- It is not required but recommended that you acclimate your RigidCore Flooring. Remove material from packaging, spread out if possible, and allow to slowly adjust to the rooms where installation is to take place.
- For best results, the environment should maintain a constant temperature of 68 and 77 F or 20-25 C for a period of 48 hours prior to installation.
- In facilities where walkers, wheel chairs (i.e. residential and/or extended care use), or in facilities with movement of heavy displays, racks, dentist chairs etc. These types of installations may exert extreme stress and compromise the locking system.

**FLOORING SHOULD BE INSPECTED PRIOR TO INSTALLATION**

- Check your RigidCore Flooring for possible defects prior to the installation. **Complaints can only be accepted before installation.** Variations in color and structure are designed to enhance nature appearance. Mixing the planks creates a random & natural appearance.

**SUBFLOOR PREPARATION**

- Although these luxury SPC RigidCore planks are water-resistant, they are not to be used as a moisture barrier. Your subfloor should be completely dry prior to installation of the RigidCore floor.
- Subfloors must be structurally sound, solid, stable, level, plumb, and true to a tolerance in plane of 3/16" in 10 feet (4.7mm in 4m). Cracks and holes must be filled with a fast setting cement-based polymer, modified patching compound or equivalent. Any unevenness over 3/16" (4.7mm) must be sanded down or leveled. The surface must be clean of dirt, oil, glue residue etc. Carpet staples or adhesive residue should be removed prior to installation. Voids or humps in the subfloor will prevent the planks from locking properly.
- RigidCore Flooring can be installed on existing firm floors (Linoleum, PVC), but all textile floors must be removed. When laying the floor over existing ceramic tiles first level with fast setting cement-based polymer modified patching compound. SPC RigidCore may not be installed over existing floating floors.

**PRE-INSTALLATION JOB SITE REQUIREMENTS**

All Subfloors must be:

- Dry
- Structurally Sound
- Clean: Thoroughly swept and free of all debris
- Level: Flat to 3/16" per 10-foot radius



## SPC Continuous Press Construction

---

### INSTALLATION

- Pre-plan the floor by measuring the room first. If the width of the last row is less than 2" (5cm) cut the first and the last plank in equal width.
- Site conditions are not a manufacturing issue. Please make sure that site preparations have been addressed.
- First, decide which direction the floor boards should run since this influences the visual size ratio of the space. Installation parallel to the longest wall or the main light-source is recommended for best visual effects.
- The direction of the tile/plank grain should be confirmed and the installation should be balanced from the center of the area to minimize waste.
- Snap a chalk line on the substrate to identify the layout reference points, planks or tiles should be set using this reference to ensure each row is aligned and will lock together correctly.
- From the left side of the room put the first plank in place so both the head and side seam grooves are exposed. Planks are to be installed from left to right. NOTE: To assist in laying the first row straight, the use of masking tape across each short end locking system is helpful. Continue this for the first two rows and remove after completion of installation.
- Install the second piece in the first row by laying the short-end tongue onto the previously installed piece short-end groove. Lock the pieces together a rubber mallet to lock the planks together. This will engage the 2G Click locking into the piece you just placed; you will hear and feel the pieces lock together as the locking tab engages in the joint. Use a soft, white No.2 rubber mallet to vertically engage the joint.
- Continue in this manner for the rest of the first row. The last piece in the row should be cut to length while maintaining the 10mm expansion gap along the perimeter of the room.
- Cut a piece that is at least 5.9" or 150mm shorter than the first plank to start the second row or use the cut off from the previous row, keeping in mind the length requirements above. Install the first piece in the second row by inserting the long side tongue into the groove of the piece in the first row at a low angle (25 degree) to the installed piece. Then firmly lower the plank while maintaining a slight pressure toward the installed piece. The pieces should fit snugly together and lay flat. Ensure that the 10mm (3/8") expansion gap is kept along the wall.
- To install the remaining planks in the second row, first align the long edge tongue into the groove of the previous row at a shallow angle. Slide the piece to the left until the piece meets the previously installed piece.
- Firmly lower the piece while maintaining a slight pressure towards the installed piece. The pieces should fit snugly together and lay flat. Engage the short edge joint as in the above.
- Work across the length of the room installing pieces in the second row. It is critical to keep these first two rows straight and square, as they are the "foundation" for the rest of the installation. Check often for squareness and straightness while installing the floor as failure to do so can result in gapping.
- The use of several 10mm (3/8") spacer blocks along the first wall will ensure the floor does not shift back towards the left wall during installation.
- Continue installing, being certain to maintain a random pattern repeat, assisted by offsetting end seams by at least 150mm (5.9"). Maintain a 10mm (3/8") expansion gap at all fixed vertical surfaces.
- Check to be certain all planks are fully engaged; if slight gapping is noticed or the pieces will not lay flat, simply disengage the long/top side joint and then carefully slide the short/end joint apart. Do not pull up on this joint as it will damage the locking mechanism! Reinstall the piece.

2295 Towne Lake Parkway Suite 116, PMB 180. Woodstock, GA. 30189

---

Office: 678.488.7283



## SPC Continuous Press Construction

---

- The last row (possibly the first row) plank width should be no less than 50mm (2") on the long seam. Remember to allow for a gap of 10mm (3/8") to the wall.
- Install wall moldings and door transition moldings last. Be sure that all moldings are fastened directly to the wall or subfloor; do not place any fasteners through the floating vinyl flooring. Care must be taken when fitting wall moldings that they do not push down on the floor. This will affect the floors ability to expand and contract and may lead to product failure.

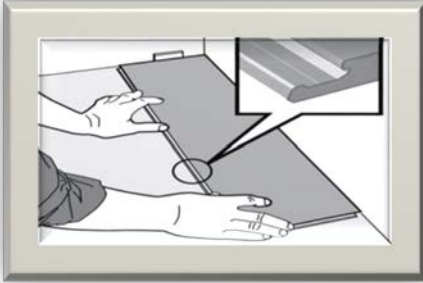
**NOTE:** The 2G Click lock joints cannot be 'lifted' or angled apart when removing or repositioning a plank. To remove a plank, first disengage the top/long angle joint by lifting at a slight angle while pulling the complete rows away from each other. Then simply 'slide' the drop joint apart along the floor. Failure to slide this joint apart will damage the drop lock mechanism and prevent proper re-installation of the affected plank.

### **INSTALLATION OVER RADIANT HEATED SUBFLOORS**

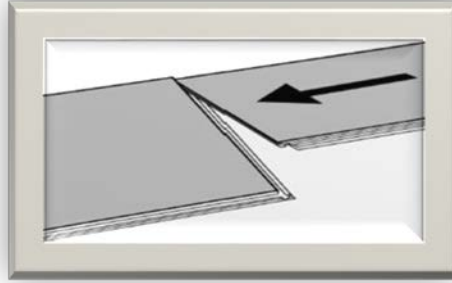
RigidCore Flooring can also be installed on an embedded radiant heated subfloor. Turn the heating system off for 24 hours before, during and 24 hours after installation. Floor temperature must not exceed 85° degree Fahrenheit (30°C). Special installation instructions concerning the subfloor must be followed.

### **AFTER INSTALLATION**

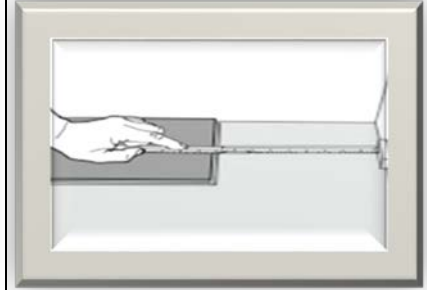
- Use rosin paper and only use 3M Scotch-Blue 2080 Tape to hold the rosin paper to the floor. Clean the floor thoroughly before laying the rosin paper to ensure that no debris is trapped underneath. **DO NOT USE** plastic film or other non-breathing coverings as this can cause increased humidity.
- Dust mop or vacuum your floor to remove any dirt or debris
- Post installation temperature should be maintained between 60°-80° F and relative humidity of 30-50%.
- SPC RigidCore Flooring is intended for indoor use only.
- Temperatures should not exceed 140° F.



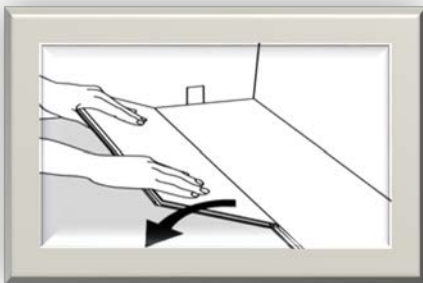
Install first row working left to right with the click side facing out.



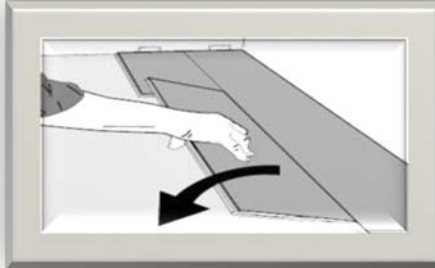
Install the second piece in the first row by laying the short end tongue onto the previously installed piece short-end groove.



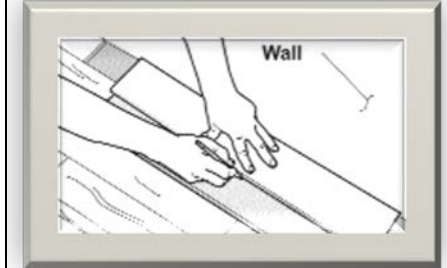
The last piece in the row should be cut to length while maintaining the 10mm expansion gap along the perimeter of the room.



Cut a piece that is at least 5.9" or 150mm shorter than the first plank to start the second row or use the cut off from the previous row, keeping in mind the length requirements above.



To install the remaining planks in the second row, first align the long edge tongue into the groove of the previous row at a shallow angle. Slide the piece to the left until the piece meets the previously installed piece.



The last row (possibly the first row) plank length should be no less than 30mm (12") on the long seam. Remember to allow for a gap of 10mm (3/8") to the wall.